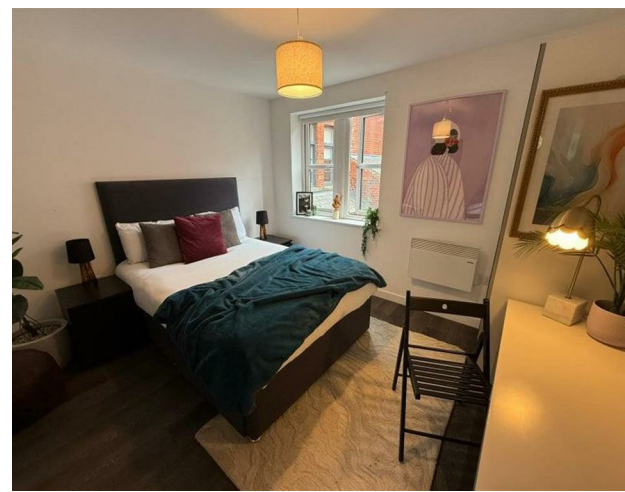


Flat 1, 20A Hyde Terrace, Leeds, West Yorkshire, LS2 9LN
£3,250

V&L
PROPERTIES



Flat 1, 20A Hyde Terrace, Leeds, West Yorkshire, LS2 9LN

£3,250

Council Tax Band:

Property Features:

Spacious and well-presented reception room, ideal for relaxing or entertaining

Living room includes a 50-inch TV

Comfortable private bedroom offering both privacy and practicality

Modern en-suite bathroom for added convenience

Modern fitted kitchen with practical storage and workspace

Bright and welcoming living space throughout

Rent: £125 pppw

GO

ALL

IN

on an all-inclusive
utility package.



 **unihomes.**

Student homes with bills included.

22 Regent Street
 Leeds
 LS2 7QA
 01133 225737
info@vgl-properties.co.uk
vgl-properties.co.uk

